

m a n s u r a

**“ECLIPSE”**  
**22’ WIDE**



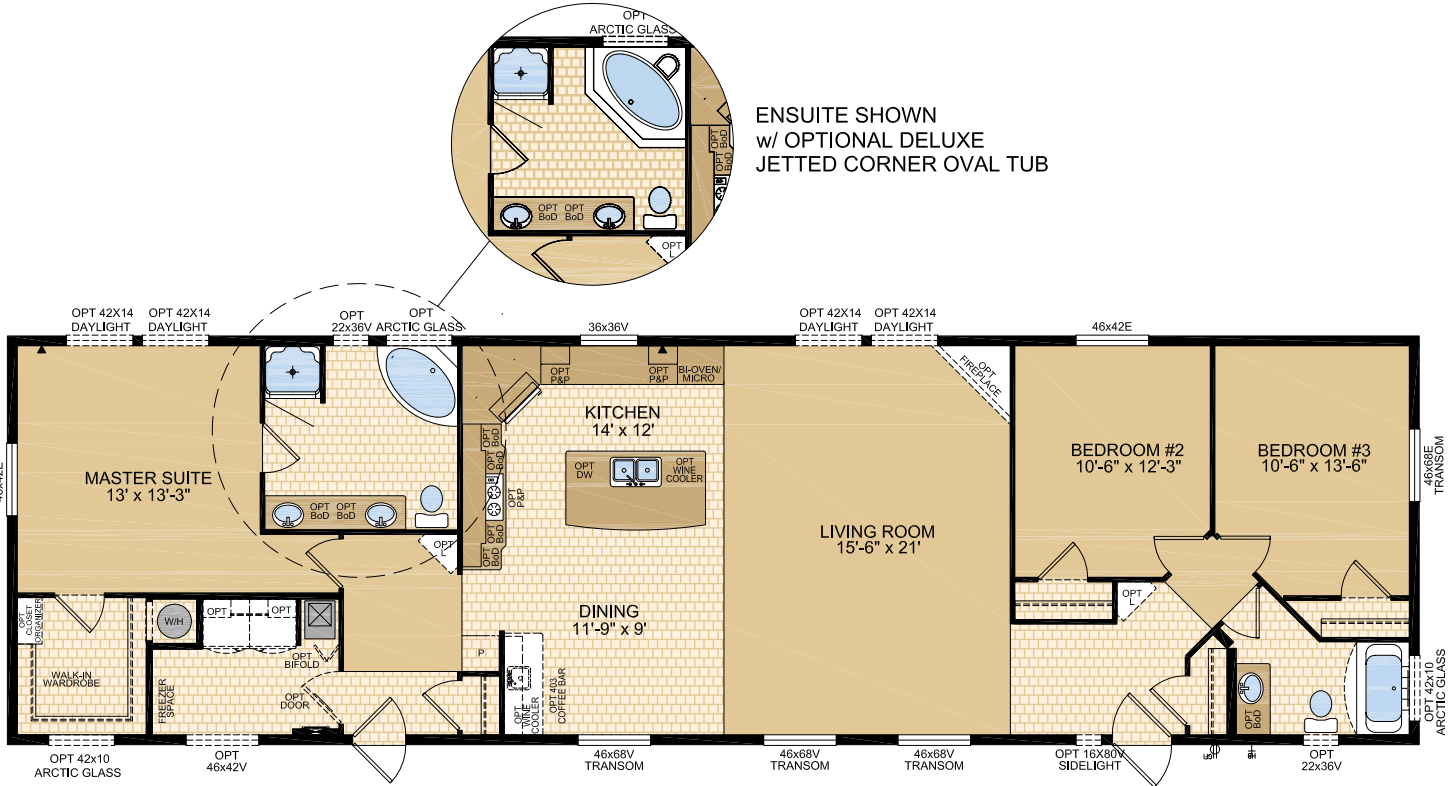
**Moduline**



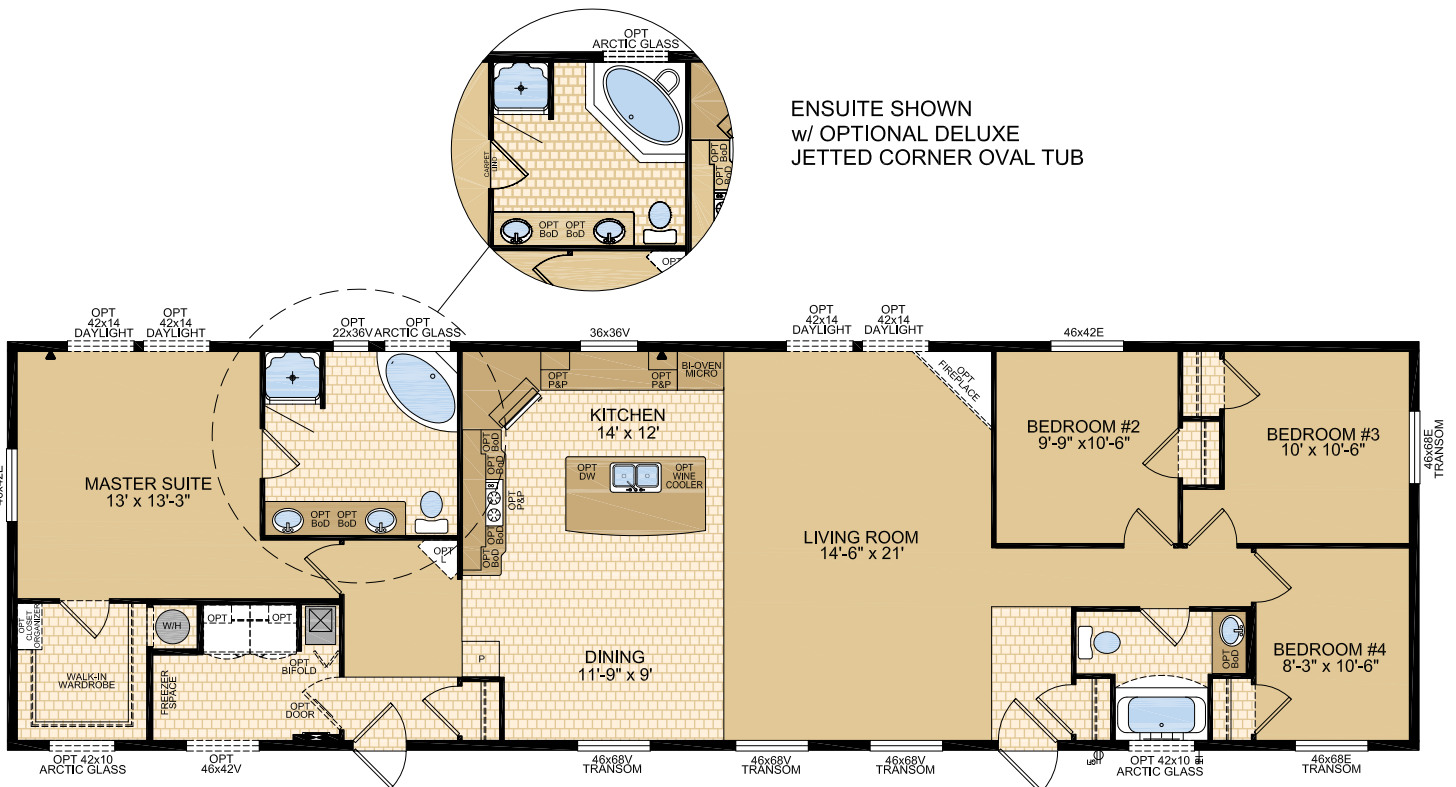
Proudly Built in Canada



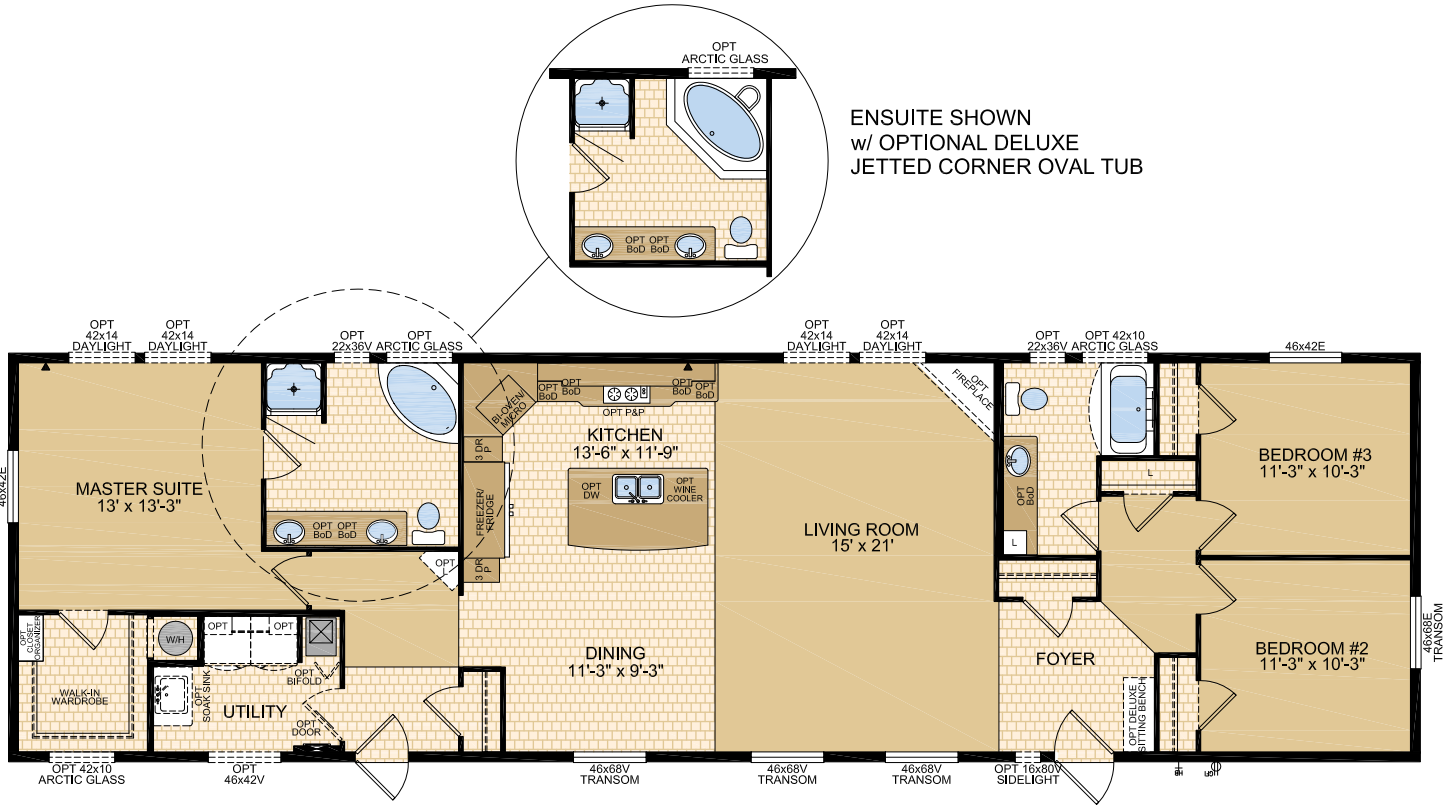
**ECLIPSE III - MODEL 22720 - 3 BED / 2 BATH - 22' x 76' 1672 SQ.FT.**



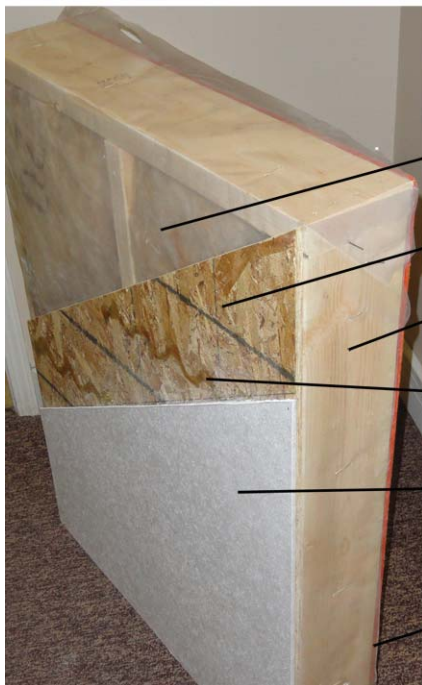
**ECLIPSE IV - MODEL 22721 - 4 BED / 2 BATH - 22' x 76' 1672 SQ.FT.**



**ECLIPSE V - MODEL 22722 - 3 BED / 2 BATH - 22' x 76' 1672 SQ.FT.**



**Exterior Wall Construction**  
*Best in the Housing Industry!*



R-20 INSULATION WITH 6 MIL POLY

3/8" INTERIOR OSB ON INSIDE OF HOME

2"X6" EXTERIOR WALLS

ALPHA GLUE TO MAXIMIZE STRENGTH  
AND MAINTAIN HOMES INTEGRITY

5/16" VINYL GYPROC PANEL

3/8" EXTERIOR SHEATHING FASTENED  
TO STUDS WITH SHEATHING STAPLES  
AND VERSABOND GLUE



# STANDARDS FEATURES & SPECIFICATIONS

## GENERAL CONSTRUCTION

- 8' Ceilings
- Cathedral ceiling in living, dining area, and kitchen
- Maintenance free vinyl lap siding and metal fascia
- Fiberglass shingle roof (25 year)
- 7/16" roof sheathing
- Engineered full 4-12 pitch roof trusses
- Textured (primed) gyproc ceiling
- Exterior walls built 2"x6" strengthened with 3/8" OSB sheathing on inside and outside of wall
- 5/8" T & G OSB Floor Decking glued and screwed
- Engineered open web truss floor @ 16"o.c. with heavy tubular steel frame
- Decorative insulated entry doors with dead bolt and peephole (36" front door)
- Coach lights at all exterior entrances
- Screen doors on front and rear entrances
- Residential maintenance free Low E PVC Argon Filled (R-5) PVC vinyl windows
- Exterior GFI electrical outlet and frost free water tap
- PVC windows c/w vinyl sills, screens and security locks
- Exterior GFI electrical outlet and frost free water tap
- Insulation meets or exceeds codes Floors R-20, Walls R-20 & Ceiling R-40 (min)

## TASTEFUL INTERIORS

- Plush saxony carpet in living room, hall and all bedrooms (certain models)
- Quality cushioned linoleum flooring all other areas
- Coordinating window valance over 2" white faux wood blinds (inset in window) in all areas except bathrooms
- Pre-finished interior passage doors in crystal white colour

## SPACIOUS BATHS

- One-piece quality fiberglass tub and shower units
- Oval tub in ensuite
- Curved shower rods in all tubs
- Deluxe tile backsplash
- GFI receptacle
- Power bath fan(s)
- Single lever faucet on tub/shower unit
- 36" vanity height in ensuite

## SPECIAL FEATURES

- Beautiful exterior features including 5/12 pitch dormer, Tudor pillars, Hardboard & Weathered Elm Shake treatments
- Wood treatment on hitch end & curbside windows
- Extended eaves on all 4 sides (12" Sides, 18" Front & Back)
- Transom windows on curbside & hitch end
- Exterior vented deluxe stainless steel range hood
- Stainless steel appliances
- Built in oven with built in microwave above
- Countertop cerantop range
- Stepped cabinets
- Countertop build out at range
- Black anthracite sink
- Anabelle kitchen faucet
- Full tile backsplash in kitchen with special tile accent
- Chef's island
- 36" shower in ensuite
- Framed mirror in both baths with theatrical lights

## UTILITY SERVICES

- 100 amp electrical panel
- High efficiency (95.1+AFUE) gas furnace with condensation pump
- 33 Imp. (40 US) gallon natural gas water heater
- Wired, plumbed and vented for washer and dryer
- Shelf above washer and dryer
- Primary exhaust fan c/w dehumidistat & switch
- CO/Smoke Detector(s) c/w battery backup
- GFI breaker and receptacle for heat tape
- Dedicated receptacle in "Freezer Area"
- Communication outlet (2) – kitchen and master bedroom

## BRIGHT, BEAUTIFUL KITCHENS

- 19 cubic foot, 2-door, frost free refrigerator
- 36 cu.ft. Full Height Fridge/Freezer with Fast Freeze (Model 22722 only)
- Spacious pantry
- Doweled, full modular cabinetry w/crown moulding
- Three distinctive colours of cabinet doors to choose from with matching moulding and trim colour



1421 Brier Park Crescent, Medicine Hat, Alberta T1C 1T8 Phone: (403) 527-1555 Fax: (403) 528-4486

In a continued effort to meet the challenges of product improvement, we reserve the right to modify plans, specifications and features without prior notice. Some homes may show optional items which are not standard. Please consult your dealer representative for details. Square footage and room sizes are approximate.

Printed in Canada March 2016