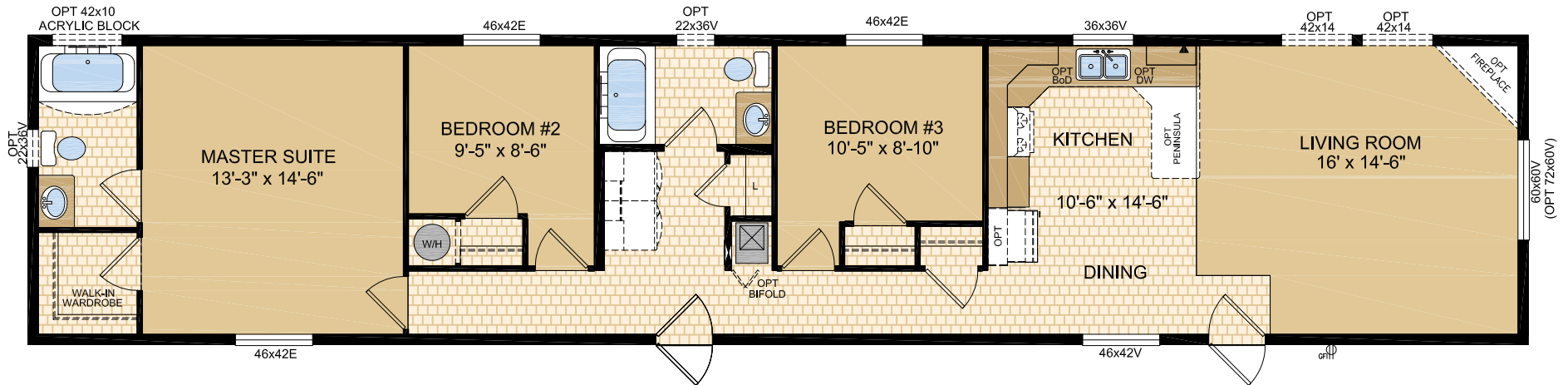


Jamestown- 16401

16' x 76', 1216 sq. ft.

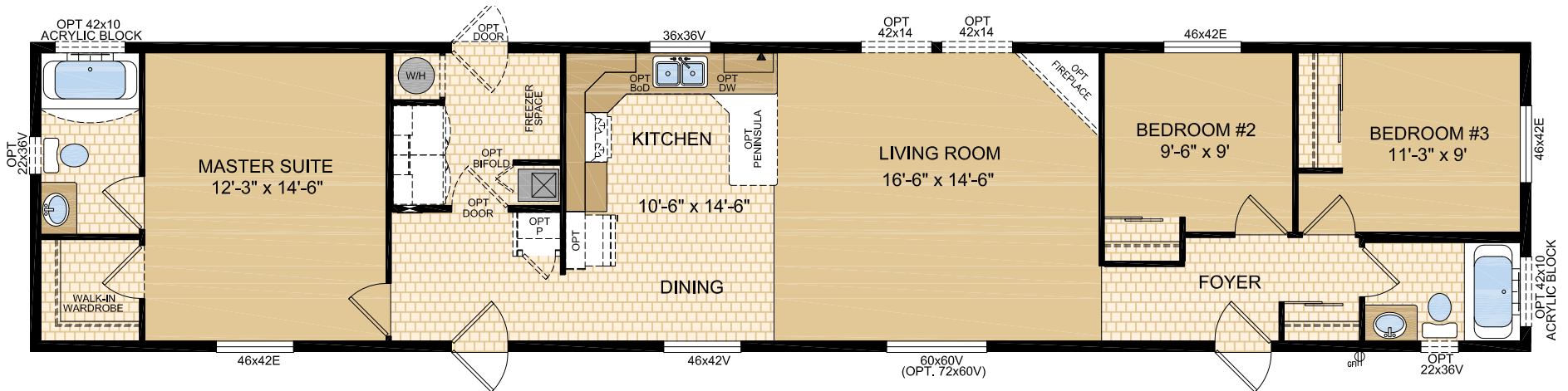
3 Bedrooms 2 Baths



Kalimore - 16405

16' x 76', 1216 sq. ft.

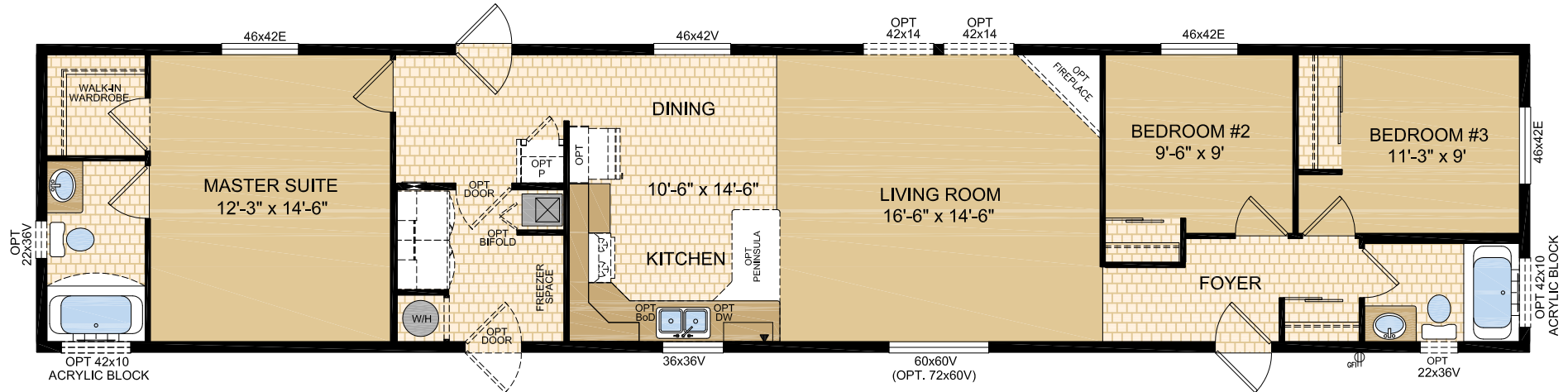
3 Bedrooms 2 Baths



Victoria - 16406

16' x 76', 1216 sq. ft.

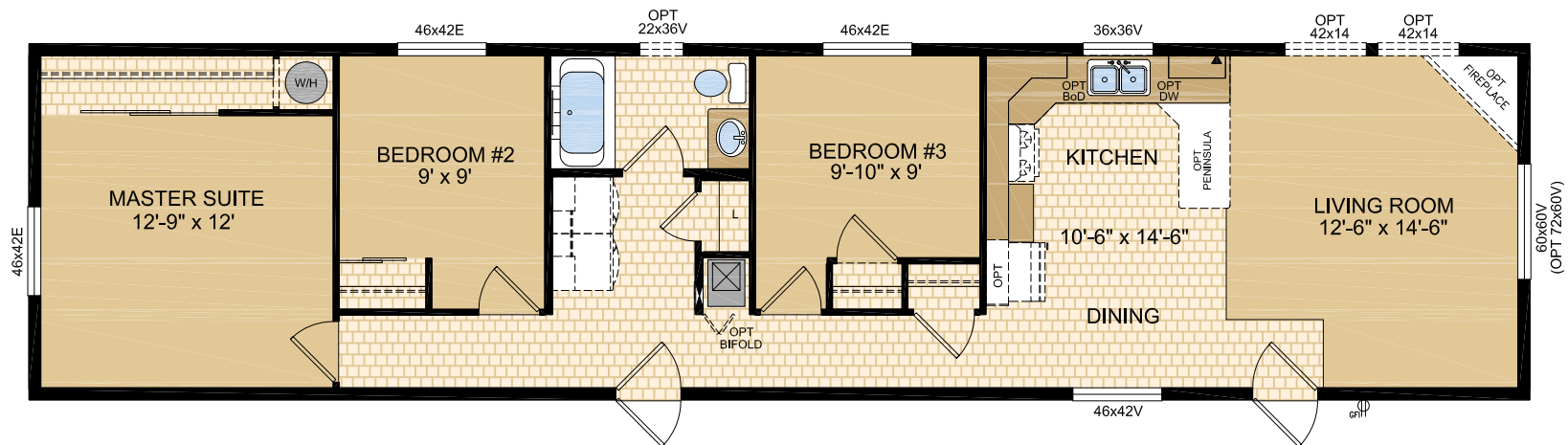
3 Bedrooms 2 Baths



Inverness - 16411

16' x 66', 1056 sq. ft.

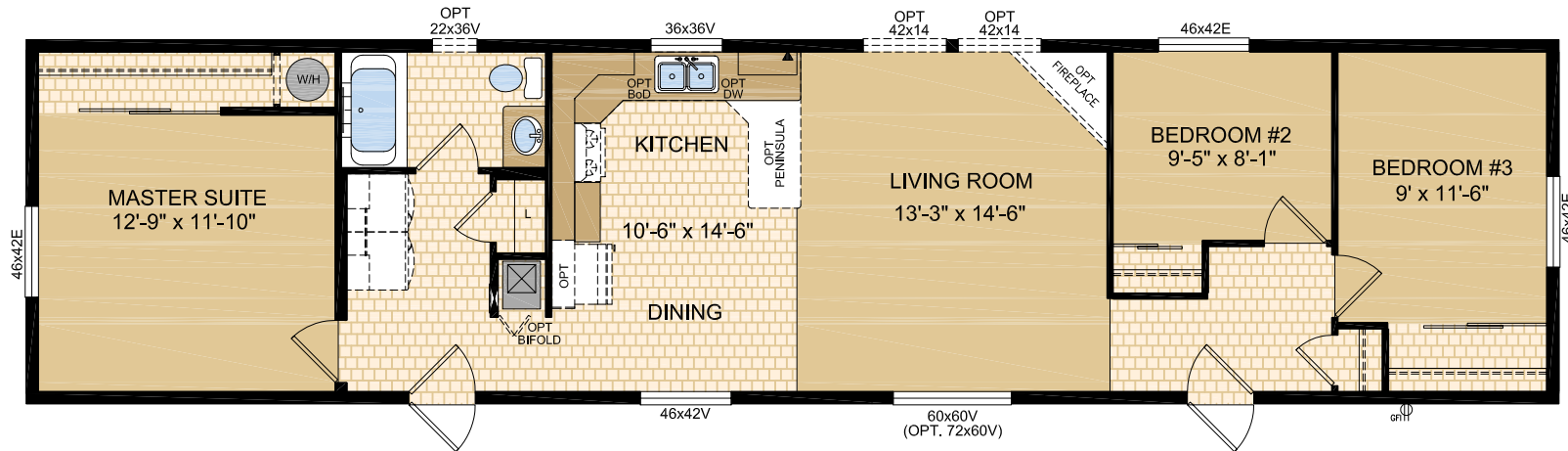
3 Bedrooms 1 Bath



Jackson - 16412

16' x 66', 1056 sq. ft.

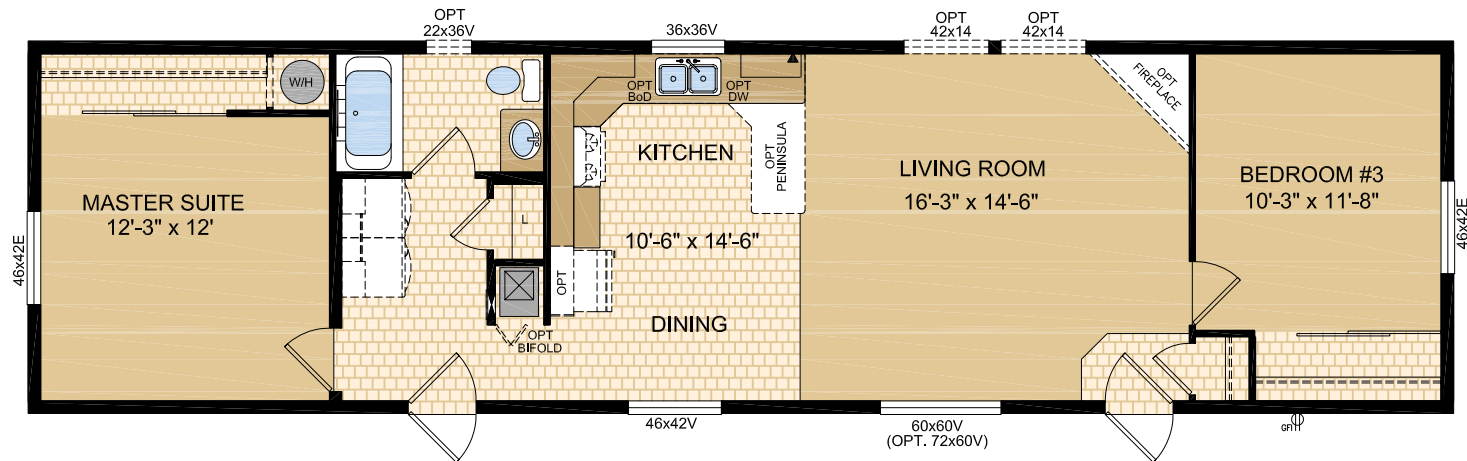
3 Bedrooms 1 Bath



Kelowna - 16422

16' x 60', 960 sq. ft.

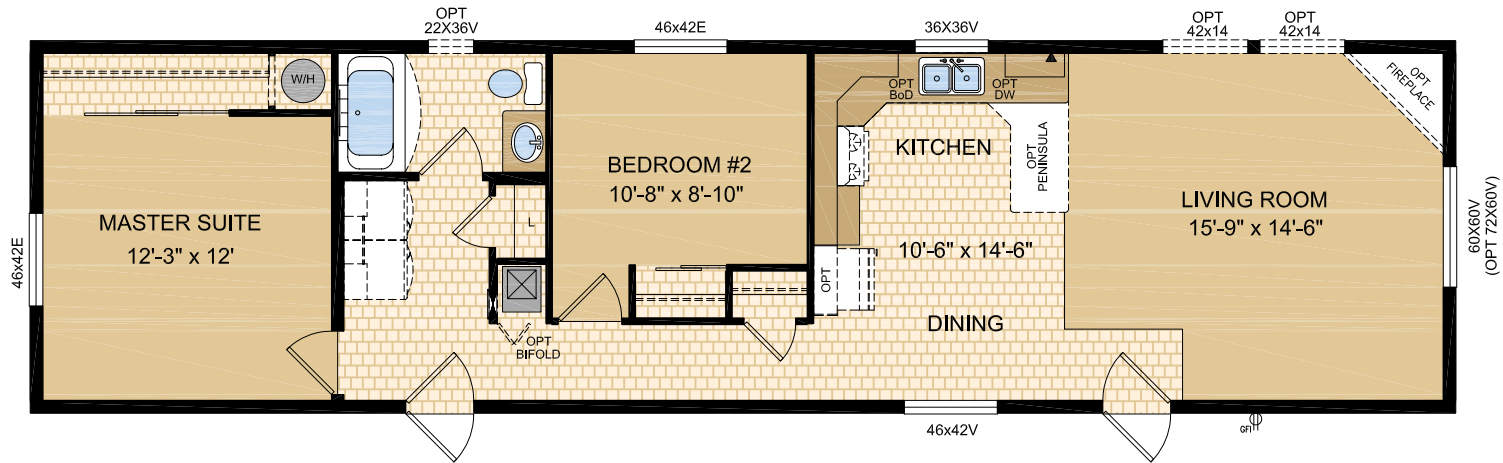
2 Bedrooms 1 Bath



Innsbruck - 16423

16' x 60', 960 sq. ft.

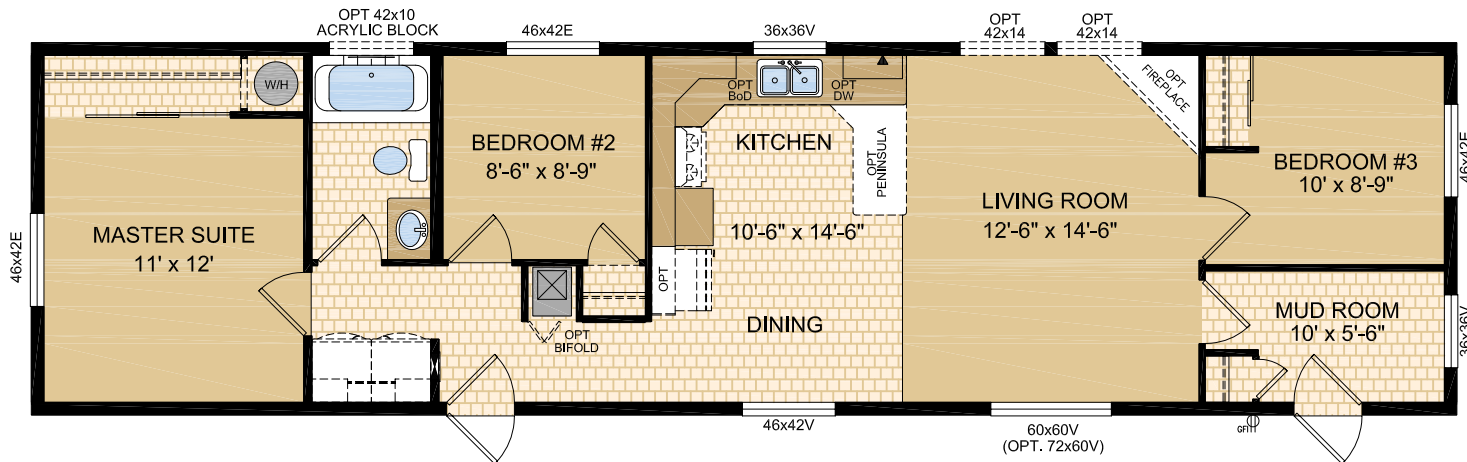
2 Bedrooms 1 Bath



Jamacia - 16426

16' x 60', 960 sq. ft.

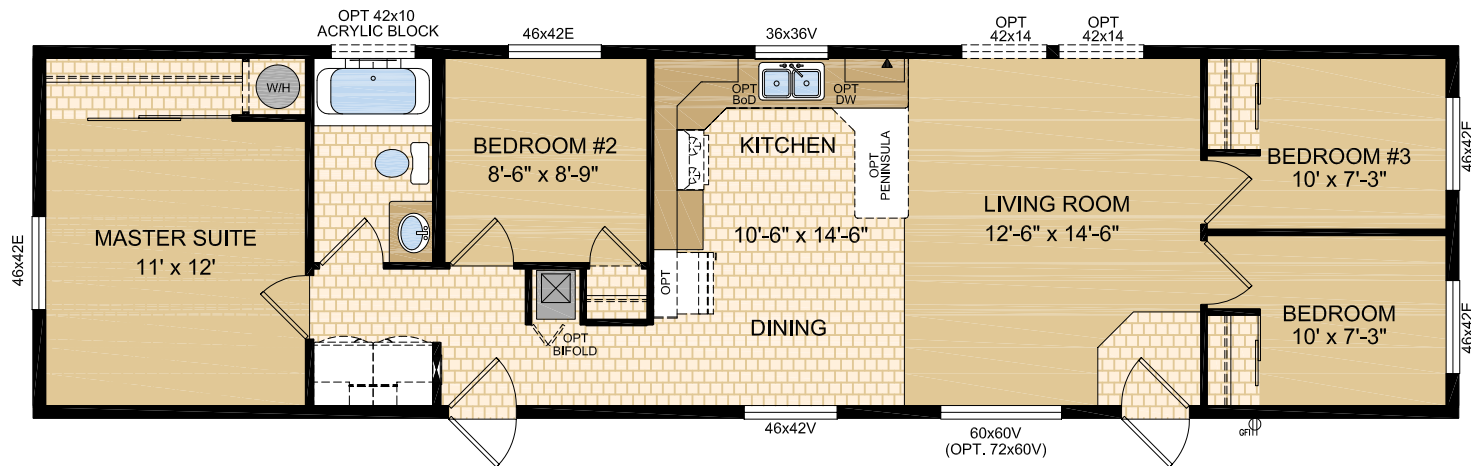
3 Bedrooms 1 Bath Mudroom



Kampala - 16427

16' x 60', 960 sq. ft.

4 Bedrooms 1 Bath



GENERAL CONSTRUCTION

- 8' Flat Ceilings
- Maintenance free vinyl lap siding and metal fascia
- Fiberglass shingle roof (25 year)
- 7/16" roof sheathing
- Engineered full 4-12 pitch roof trusses
- 18" front vented eaves (no side or rear eaves)
- Textured (primed) gyproc ceilings
- Exterior walls built 2"x6" @ 16" o.c. strengthened with 3/8" OSB sheathing on inside and outside of wall
- Covered gyproc throughout
- 5/8" T & G OSB Floor Decking glued and screwed
- Heavy tubular steel frame
- 2"x10" Floor joists @ 16" o.c. (16' & 20' wides)
- Decorative insulated 32" entry doors with dead bolt and peephole
- Coach lights at all exterior entrances
- Screen doors on front and rear entrances
- Residential maintenance free Low E PVC windows, screens and security locks
- Exterior GFI electrical outlet
- Insulation meets or exceeds codes Floors R-20, Walls R-20 & Ceiling R-40 (min)
- *Insulation plus package is a forced option on all BC homes

TASTEFUL INTERIORS

- Plush Saxony carpet in Living Room, all bedrooms, and hallways in 20' wides (lino in hallways of 16' wides)

- Quality cushioned linoleum flooring all other areas
- Switched receptacles in bedrooms
- Pre-finished interior passage doors

BRIGHT, BEAUTIFUL KITCHENS

- Exterior vented range hood with light
- Double stainless steel sink
- Doweled, full modular cabinetry
- Flat PVC natural apple cabinet doors
- Window over kitchen sink (most models)
- Peninsula Kitchen (20' wides only)

SPACIOUS BATHS

- One-piece quality fiberglass tub and shower units
- Single lever faucet on tub/shower unit
- Expansive vanity mirrors
- GFI receptacle
- Exhaust fan(s)

UTILITY SERVICES

- 100 amp electrical panel
- High efficiency (95.1+AFUE) gas furnace with condensation pump
- 33 Imp. (40US) gallon electric water heater
- Primary exhaust fan c/w dehumidistat & switch
- CO/Smoke Detector(s) c/w battery backup
- GFI protected receptacle for heat tape
- Wired, plumbed and vented for washer and dryer
- Communication outlet

NO CUSTOM CHANGES**DECORS ARE SUBJECT TO CHANGE WITHOUT NOTICE**