

24' Wide RTM Series

(Ready To Move)



SRI
REGENT
www.srihomesregent.com

24' Wide RTM Series

(Ready To Move)

STANDARDS & SPECIFICATIONS

EXTERIOR

- ✓ Colour coordinated metal fascia
- ✓ Vinyl siding & white vinyl soffit
- ✓ 4/12 pitch roof
- ✓ Exterior GFI receptacle - front door
- ✓ Exterior frost-free tap – kitchen sink
- ✓ 30-year architectural fiberglass shingles
- ✓ 7/16" roof sheathing
- ✓ Residential 16" eaves (4 sides)
- ✓ Separate receptacle for heat tape
- ✓ Engineered roof trusses to 2.7 KPA snow load
- ✓ 14" Engineered open web joists (19.2" o.c.)
- ✓ 3/8" wall sheathing on inside & outside of exterior walls
- ✓ 2x6 side walls at 24" o.c. - 8' walls
- ✓ Hangered floor on double LVL rim joist
- ✓ Insulation: R22 walls; R44 ceiling; R48 floor
- ✓ 19/32" T&G subfloor

KITCHEN

- ✓ Adjustable shelf in all cabinets – (2) upper & (1) lower
- ✓ Double stainless-steel sink
- ✓ Roller drawer slides
- ✓ PVC cabinet doors
- ✓ 18 cu. ft. frost free refrigerator
- ✓ 30" electric range with clock and timer
- ✓ 2-speed range hood with light and fan vented to exterior
- ✓ White kitchen appliances
- ✓ Communication box (empty) at kitchen area
- ✓ Single lever faucet with vegetable sprayer
- ✓ Upper corner cab - narrow reed glass
- ✓ Microwave cabinet with separate circuit (most models)

MISCELLANEOUS

- ✓ Electric smoke/CO detector(s)
- ✓ 100-amp service panel
- ✓ Main electrical conduit through floor
- ✓ White receptacles and switches
- ✓ Light bulb package
- ✓ Programmable thermostat
- ✓ Airtight Protocol

BATHROOM

- ✓ Exhaust fan with humidistat in main bath
- ✓ Exhaust fan in ensuite on separate switch
- ✓ Towel bar and towel ring (most models) in each bath
- ✓ Cosmetic box in main bath
- ✓ Showerhead in all baths
- ✓ Shower rod and shower curtain liner in all baths
- ✓ GFI receptacle in all baths
- ✓ Walled tub/shower with single lever pressure balanced faucet in all baths
- ✓ Single lever faucets in all baths
- ✓ Theatrical lights in all baths

INTERIOR

- ✓ Decorative vinyl covered drywall
- ✓ 6 mil. vapour barrier includes switches and receptacles
- ✓ Plush carpet in LR, MBR, Bedroom #2/#3/#4, FR, hall
- ✓ Quality vinyl floor covering
- ✓ Cathedral ceilings in LR, DR, KIT
- ✓ Ceiling lights in all bedrooms
- ✓ Wire only ceiling light in living room
- ✓ Pendant light in dining room
- ✓ Solid shelving in all closets
- ✓ White embossed passage doors with lever handles
- ✓ 4" ceramic tile backsplash at kitchen and vanities with tile edging
- ✓ 2x4 interior walls
- ✓ Vinyl wrap moulding throughout

EXTERIOR DOORS & WINDOWS

- ✓ Insulated steel exterior doors, 36" front and rear (where possible) with peepholes and deadbolts with lever door handles
- ✓ Coach lights at all exterior doors
- ✓ LowE PVC windows and sills with screens

UTILITIES

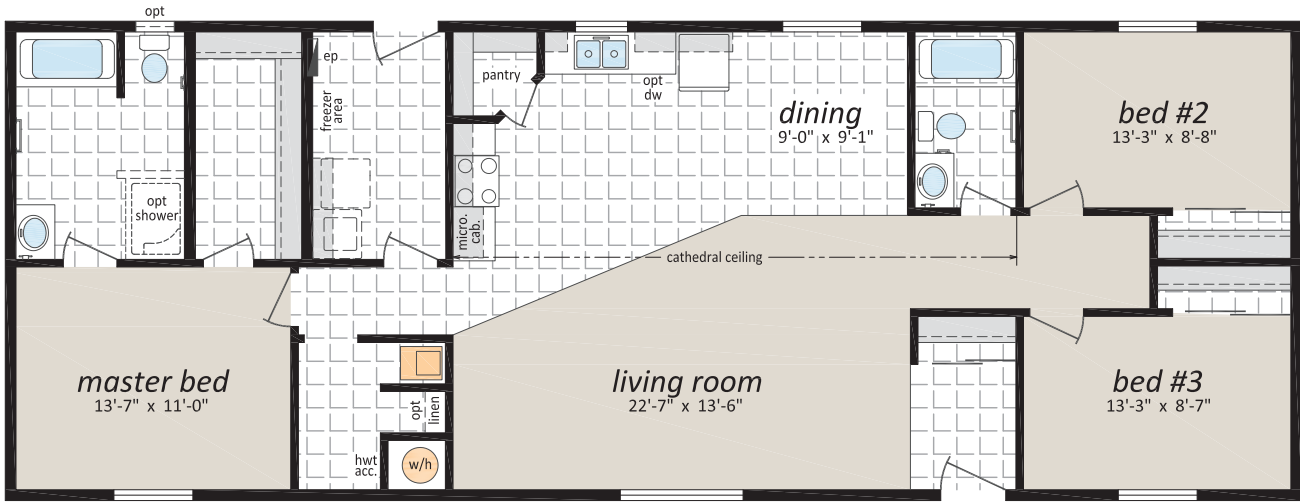
- ✓ Plumbed and wired for washer/dryer
- ✓ Natural gas high efficiency furnace
- ✓ Dryer vent rough in
- ✓ Electric hot water tank
- ✓ Overhead solid shelf at washer/dryer area
- ✓ Insulated lines in HWT cavity

24' Wide RTM Series

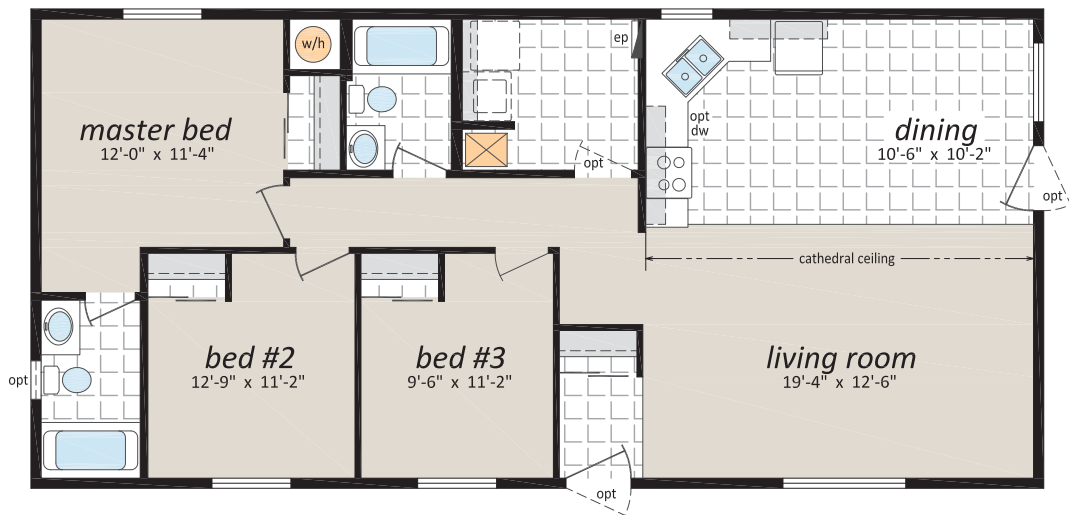
(Ready To Move)

RTM-24001, 24' x 64' - 1,536 sq. ft.

Note: rendering shown on coverpage



RTM-24003, 24' x 50' - 1,200 sq. ft.



24' Wide RTM Series

(Ready To Move)

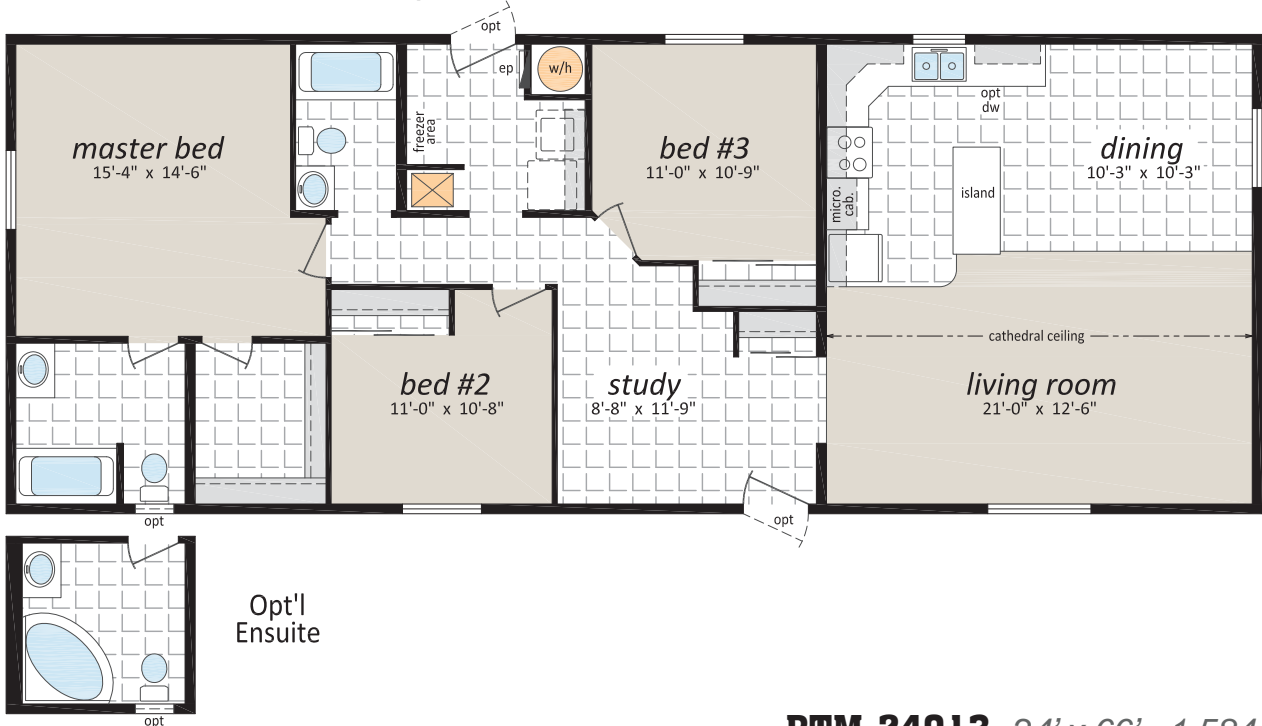
RTM-24005, 24' x 62' - 1,488 sq. ft.



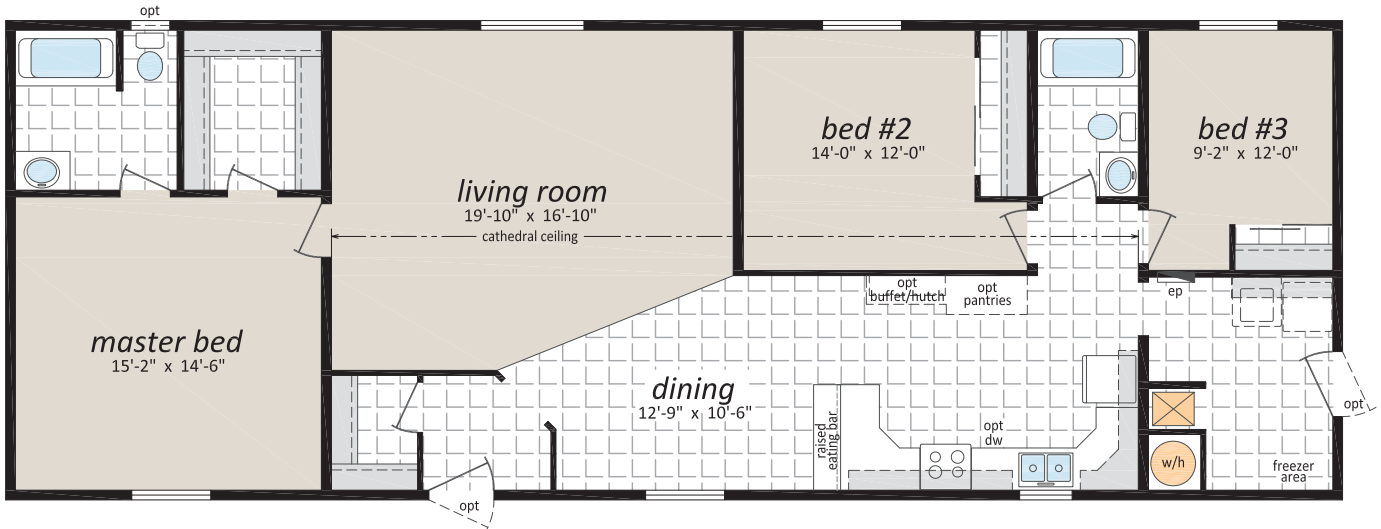
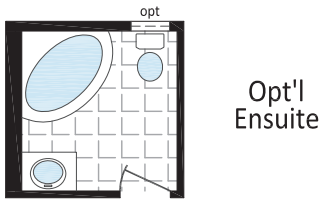
24' Wide RTM Series

(Ready To Move)

RTM-24011, 24' x 62' - 1,488 sq. ft.



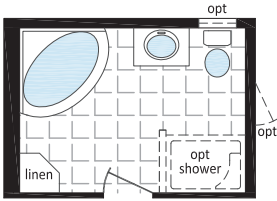
RTM-24013, 24' x 66' - 1,584 sq. ft.



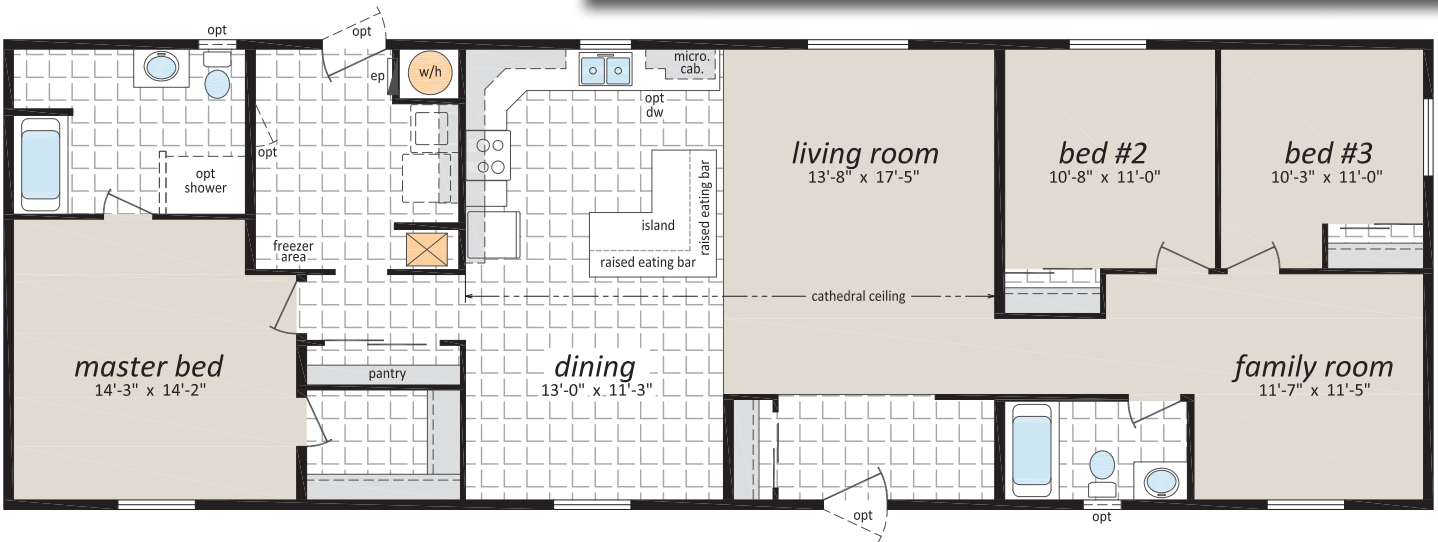
24' Wide RTM Series

(Ready To Move)

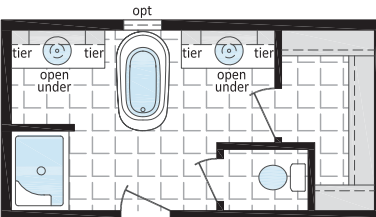
RTM-24015,
24' x 72' - 1,728 sq. ft.



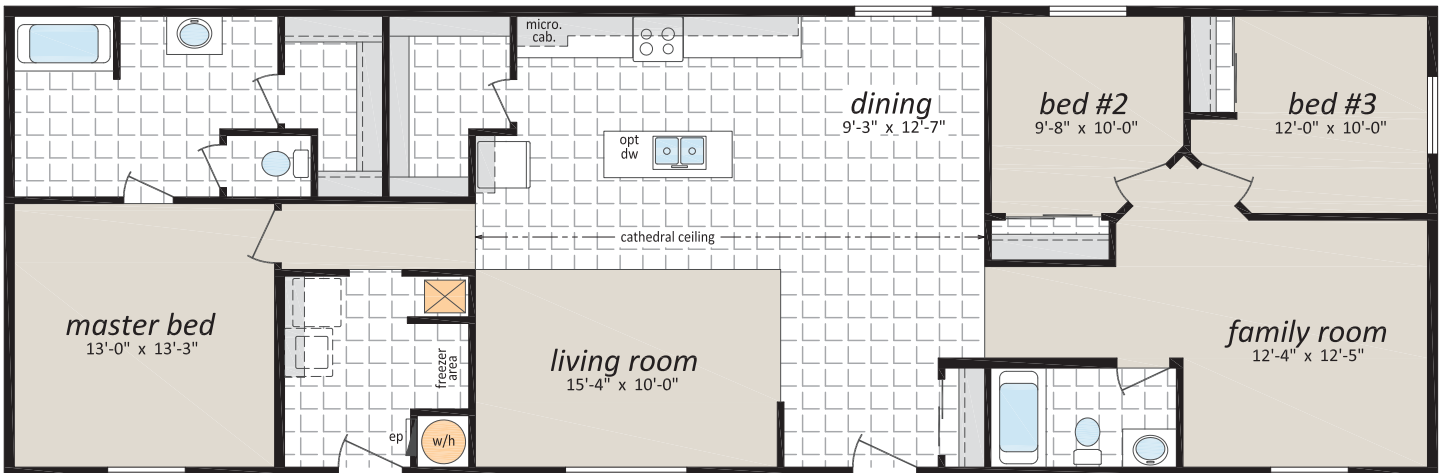
Opt'l
Ensuite



RTM-24037, 24' x 72' - 1,728 sq. ft.



Opt'l
Ensuite



24' Wide RTM Series

(Ready To Move)

OPTIONAL FEATURES

EXTERIOR

- Shutters (Two Styles)
- Diamond Cut Ceilings
- Three and Four Light Bay Windows
- Octagon Windows
- Segmented Block Windows
- Lattice in Windows
- Skylights
- Patio, Garden and Cottage Doors
- Storm Doors
- Exterior Door with Half Round, 9 Lite or Franklin Insert
- Turbine Vents
- Door Chimes
- Exterior Recessed Pot Light(s)
- Extra Exterior GFI
- High Snow Load Roof

INTERIOR

- Fully Finished Drywall
- Media Room Package
- Laminate Flooring
- Upgrade Vinyl Floor Coverings
- French Doors
- Storage Bench
- Freezer Cabinets
- Soak Sink with Cabinet
- Utility Room Door
- Ceiling Fan with Lights
- Chandeliers
- Recessed Fluorescent Lights
- Under Counter Lighting
- Archways

BATHROOM

- 72" Tub/Shower
- Corner Oval Jetted Tub
- 2 Person Jetted Tub
- 36", 48" or 60" Shower c/w Glass Doors
- Handicap Toilet
- Tri-Mirror Medicine Cabinet
- Grab Bars
- Deluxe Shower Curtain
- Banjo Countertop on Vanity

KITCHEN

- Various Cabinet Door Selections
- Wand Style Deluxe Single Lever Kitchen Faucet
- Corner Glass Cabinet Doors
- Island Work Centre
- Planning Centre
- Lazy Susan
- Granite Composite Upgrade Sink
- Oak Counter Edging
- Black or Stainless Appliances
- Built-In Dishwasher
- Combination Microwave/Range Hood
- Eye Level Oven and Cook Top Range
- Self Cleaning Range
- Two Door Side by Side Refrigerator

UTILITIES

- Gas Fireplace c/w Air Circulating Fan
- 40 Gallon U.S. Gas Water Heater
- Forced Air Electric Furnace
- Air Conditioner-Ready Furnace
- Washer and Dryer
- Stacking Washer and Dryer
- Central Vacuum System
- Roughed in for Central Vacuum
- 200 Amp Service Panel
- Extra Telephone Jack(s)



24' Wide RTM Series

(Ready To Move)



CANADIAN STANDARDS
ASSOCIATION



Canadian
Home Builders'
Association



10 YEAR



Progressive
HOME WARRANTY



131 Stubb Ross Road
Lethbridge, AB T1K 7N3
www.srihomesregent.com